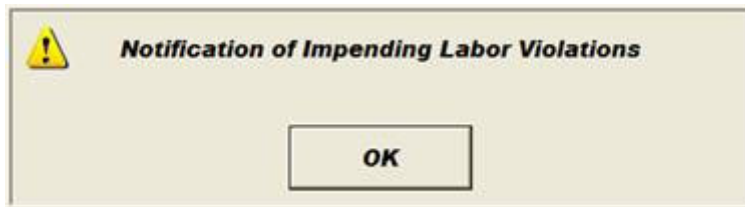




Software Enhancement
Schedule Compliance Monitor

The service, Comtrex Schedule Compliance Monitor, is activated by a setting defined below. If activated, the service will check the employee punch file in the database against the Schedule Compliance settings at a predefined interval, defined below as the "Alarm Interval Minutes". When a potential violation of a labor law relating to a minor is about to occur, the service will warn management. Since the manager will most likely not be monitoring the BackOffice computer, the POS terminals will be used to warn of a possible impending violation.

Each and every POS terminal will show two prompts when a potential violation is about to occur. Regardless of the current state of the POS terminal, these two prompts must be dismissed by the POS Operator. The first warning is generic, that is, it is independent of the exact violation about to occur.



The POS Operator must depress the OK button to dismiss the prompt. When this prompt is dismissed, a second prompt will appear. This will list all of the potential violations. Of course, if the prompt is ignored, then the prompts will not list potential violations but actual violations. If the violation is cured, e.g. a minor goes on break or clocks off for the day, then the warning will not reappear. If the violation is not cured after the expiration of the Alarm Interval Minutes, the cycle will repeat.

Schedule Compliance Definitions

- **Monitor Active.** A check mark here is required to enable the Schedule Compliance functionality.
- **Alarm Window Minutes.** This defines the warning time provided in advance of a potential labor violation. It works in conjunction with the last entry, "Alarm Interval Minutes".
- **Age.** Defines the maximum age for a minor. If an 18 year old is not subject to these provisions, then enter 17. The program will use the birthdates programmed in Employees for evaluating potential labor violations.
- **Max Hours Per Day.** This is a "whole number" entry. This defines the maximum number of hours a minor is allowed to work in a single day.
- **Max Hours Per Week.** This is a "whole number" entry. This defines the maximum number of hours a minor is allowed to work in a work week.
- **Max Hours Before Break.** This is a "whole number" entry. This defines the maximum number of hours a minor is allowed to work before a mandatory break must be taken.
- **Minimum Break Minutes.** This entry is similar to the entry programmed for each employee, "Subject to Minimum Break". That flag applies whether the employee is a minor or not. You would generally NOT set the flag for minors and would use this entry instead. A minor will not be allowed to go "off break" prior until this minimum number of break minutes has been taken.
- **Alarm Interval Minutes.** This setting defines how often the Schedule Compliance Monitor "checks" for violations. In order to not totally disrupt POS operations, a reasonable setting is 4 minutes. This setting affects the operation of the setting "Alarm Window Minutes". If the Alarm Window Minutes is set for 10 minutes, and the Alarm Interval Minutes is set for 4, it is possible that the actual window will only be slightly greater than 6 minutes if the Monitor has checked at 10 minutes plus 1 second prior to a violation occurring. To get an "average" warning of 10 minutes, you could set the Alarm Window Minutes to 12. That way you might get almost 12 minutes of warning or just over

8 minutes of warning, depending on when the Monitor checked the punch information against the Compliance Definitions.